

Haringey's Local Plan 2011-2026

Local Plan Emerging Consultation

Stakeholder Presentation
January 2015

Neil Goldberg
Planning Policy

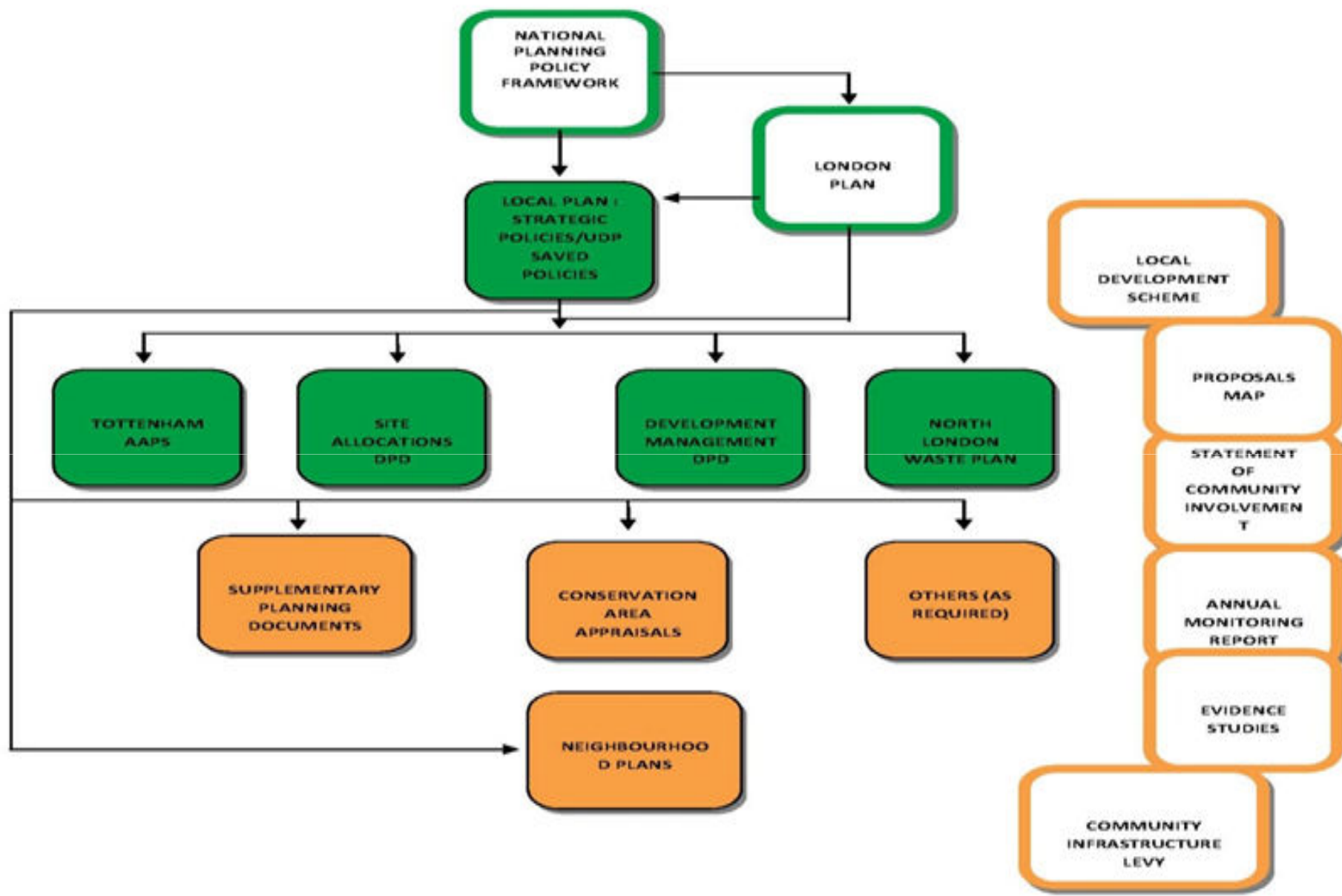


What is a Local Plan?

- Guides development in the borough
- Requirement to prepare a clear, up to date Local plan which:
 - Conforms to National and Regional Policy;
 - Meets local development needs;
 - Plans positively for the development and infrastructure; and
 - Reflects local people's views on how they wish their Local area to develop.
- The Local Plan comprises a series of documents
- Is used to determine planning applications



Haringey Council



Haringey's Local Plan

- Strategic Policies Local Plan (aka Core Strategy) 2013 (Plan Period 2011-2026)
- UDP Saved Policies

Also includes...

- The London Plan 2011 (2015 version emerging)
- National Planning Policy Framework (NPPF)
- Haringey Supplementary Planning Guidance





What are we consulting on?

Why are we consulting?

- Moving from a Unitary Development Plan to Local Plan (previously called 'The Local Development Framework')
- The requirement to prepare an up-to-date Local Plan
- New housing and population growth expectations for Haringey, particularly in Tottenham
- Changes to national and regional planning policies



Haringey Council

Amendments to the Strategic Policies Local Plan 2013

- Not a wholesale review
- balances growth across the whole Borough
- Changes in the overarching planning framework, including at the national and regional level, which affect planning locally
- New housing delivery targets
- New evidence base research

Emerging Spatial Pattern of Growth in Haringey

- Spatial Pattern of growth
 - Growth Areas – Tottenham Hale & **Wood Green (including Haringey Heartlands)**
 - Areas of Change – Rest of Tottenham (including Seven Sister Corridor, Northumberland Park)
 - Area of Limited Change – Strategic Brownfield Sites



Haringey Council

Development Management Development Plan Document

- ‘ Haringey Housing Charter’
- Delivering homes to meet housing needs
- Protection of open space
- Securing new employment space and managed protection of existing
- Basement policy
- Protection for public houses
- Restricting Hot food takeaways and betting shops
- Protecting family housing



Haringey Council

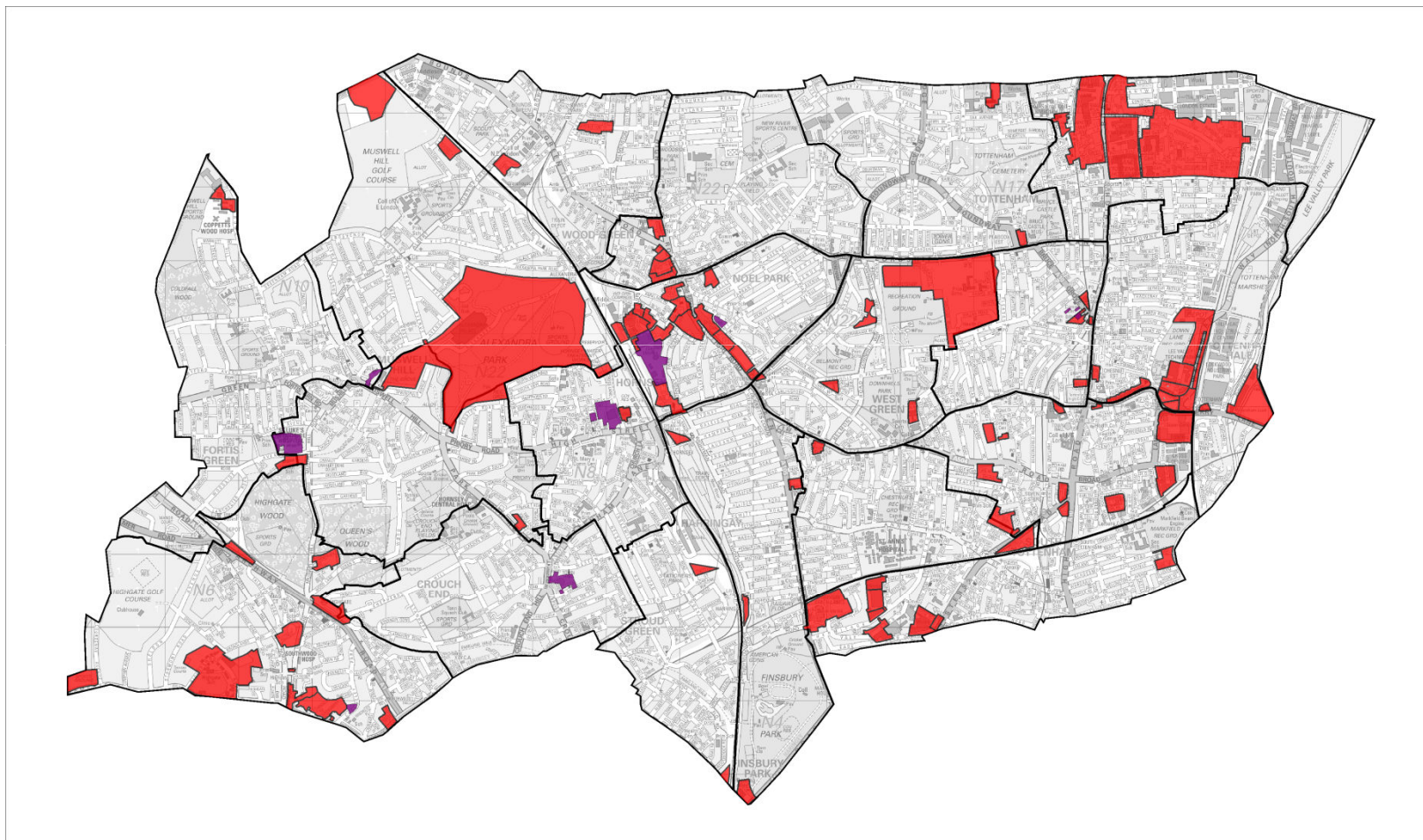
Tottenham Area Action Plan

- 10,000 new homes and 5,000 new jobs
- Maximising opportunities from Crossrail and funding
- Public realm improvements
- Green link to regional park
- New district centre at Tottenham Hale
- 25 Site allocations for Tottenham

Site Allocations Development Plan Document (outside Tottenham)

- 63 allocated sites – delivering 9,000 homes
- 100,000m² of new employment floorspace
- Protecting licensed waste sites
- Reconfirming town centre boundaries
- Identifying locations for taller buildings and protecting other areas from unsuitable development

All emerging Allocated Sites in Haringey.



Next Steps

- Reports on four Local Plan document to Cabinet 20 January 2015
- 6 week Public Consultation from 9th February – 23rd March 2015.

For more information

- Contact the Planning Policy Team on:

Planning Policy

Level 6, River Park House, 225 High Road, Wood Green, N22 8HQ

Tel 020 8489 1479

LDF@haringey.gov.uk

Or

Neil.goldberg@haringey.gov.uk



Haringey Council